



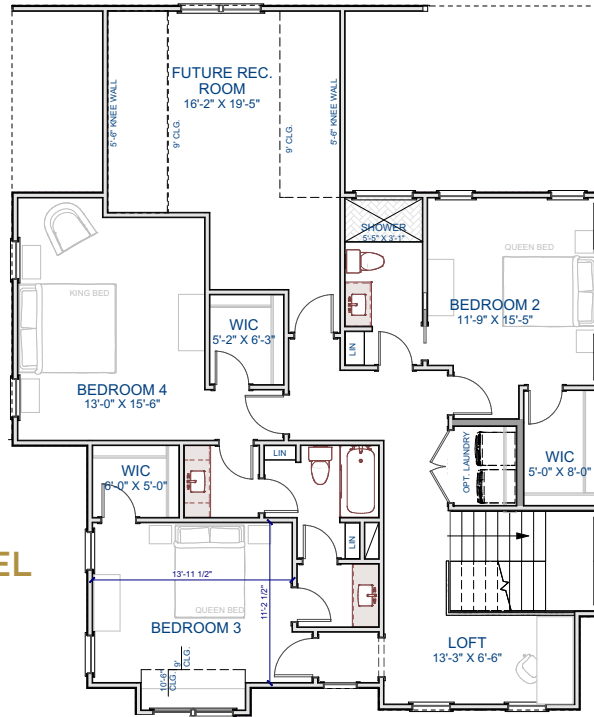
**STONEGATE**  
AT ST. ANDREWS

**COPPER BUILDERS**  
BUILT ON TRUST

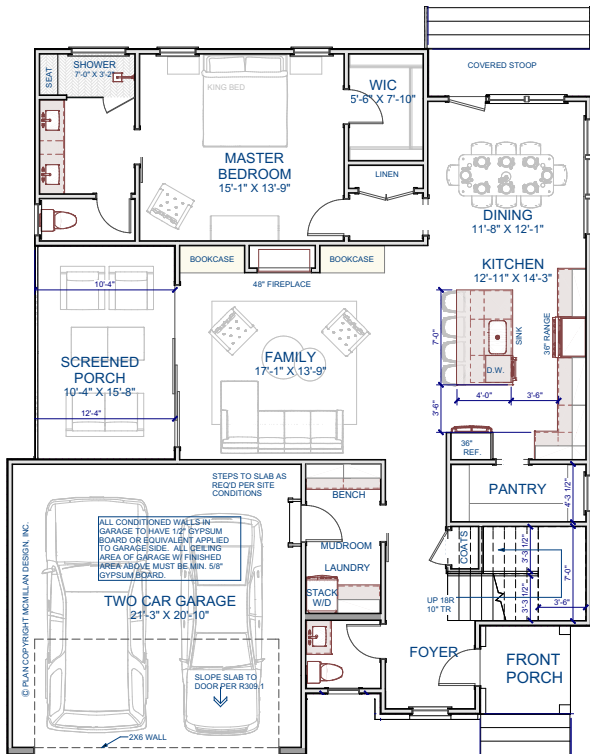
# BIRKDALE

## PLAN FEATURES

- 2,563 Sq. Ft.
- 4 Bedrooms
- 3.5 Baths
- Width 41.6' / Length 52'
- Covered Outdoor Living
- Future Rec. Room
- Second-Floor Loft



Scan to learn more about Stonegate at St. Andrews



StonegateLiving.Homes

919.845.9909

Info@JimAllen.com